



# KEALI'I

BY GENTRY

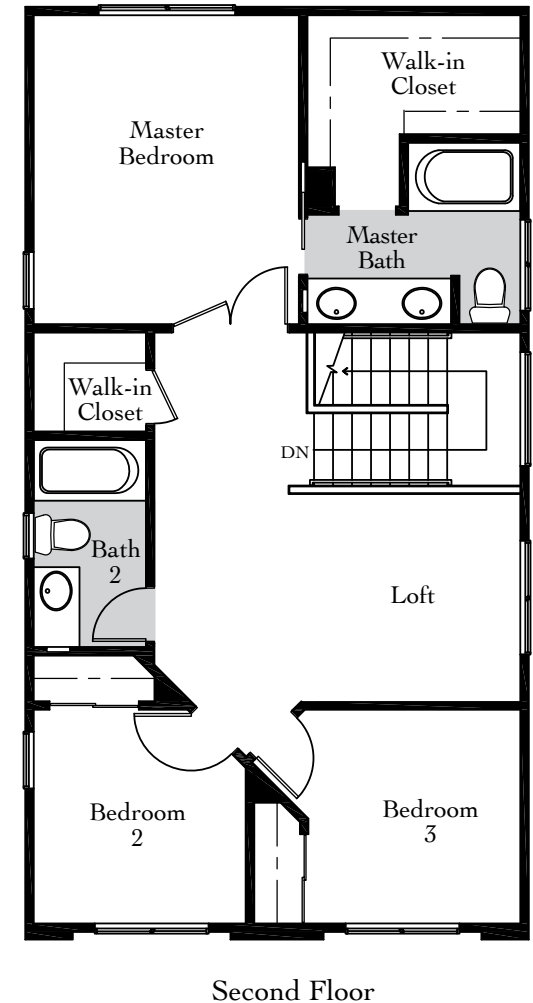
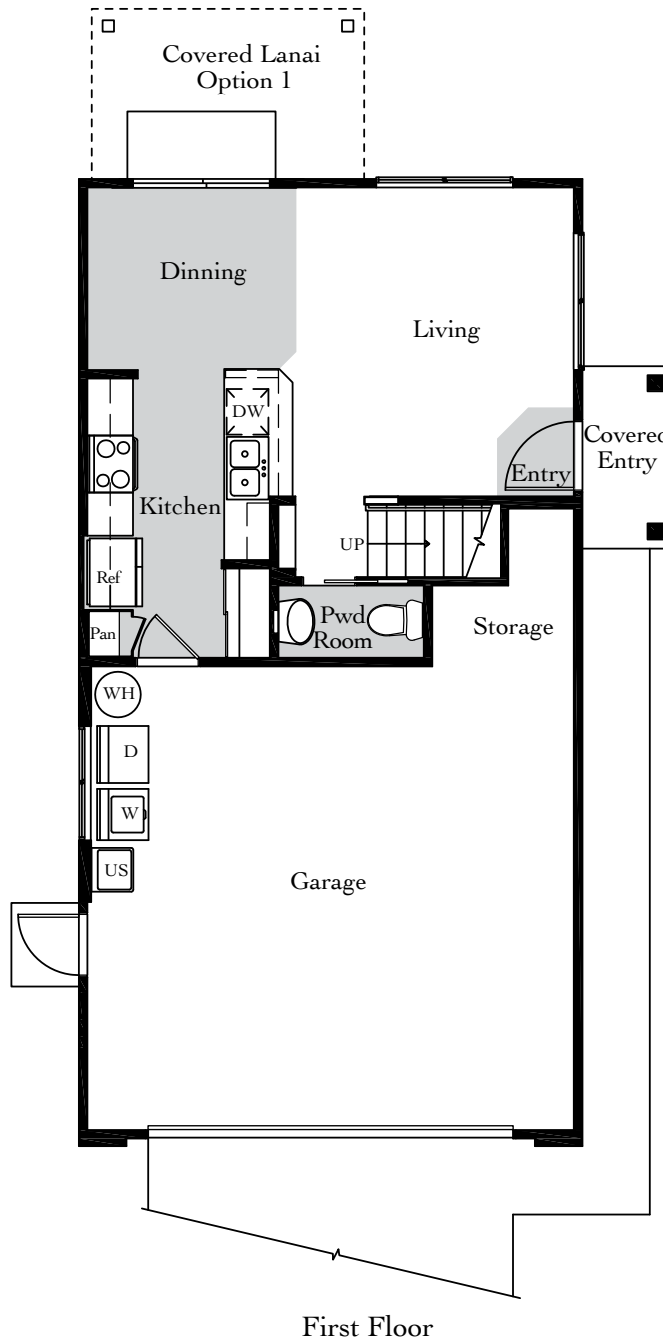
# PLAN A

## 3 Bedroom, 2.5 Bath



First Floor	405 sq. ft.
Second Floor	789 sq. ft.
Total Living Area	1,194 sq. ft.
Covered Entry	24 sq. ft.
Garage	463 sq. ft.
Option-1 Covered Lanai	76 sq. ft.

Rendering may be slightly altered. Square footages are approximate. Features may vary due to location and site conditions. Gentry reserves the right to make changes to design specifications and make material substitution without notice. These plans are copyrighted. Unauthorized copying or use of these plans is a willful infringement of Gentry Homes, Ltd.'s rights under copyright law and may result in a liability up to \$100,000 and attorney's fees and costs incurred to protect its rights.



# PLAN B

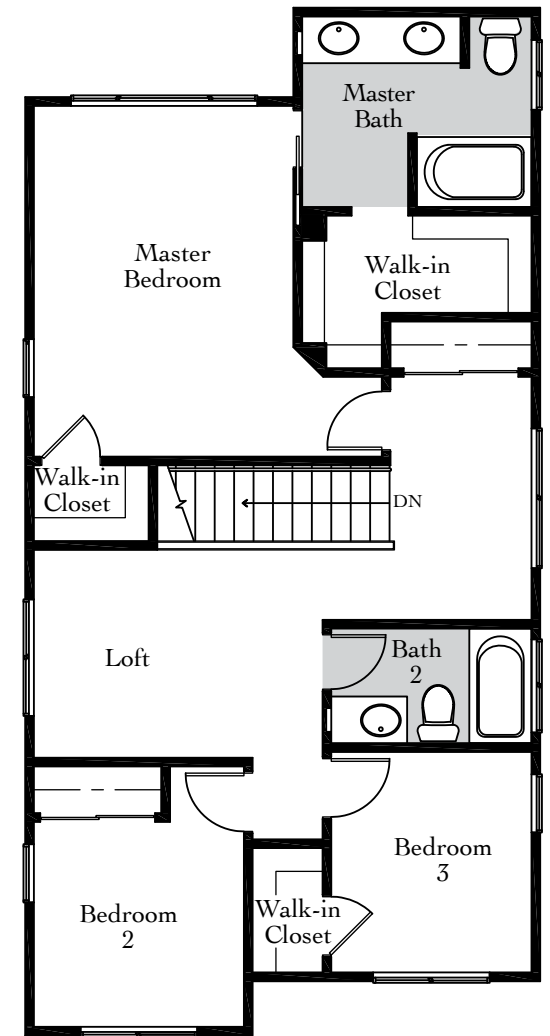
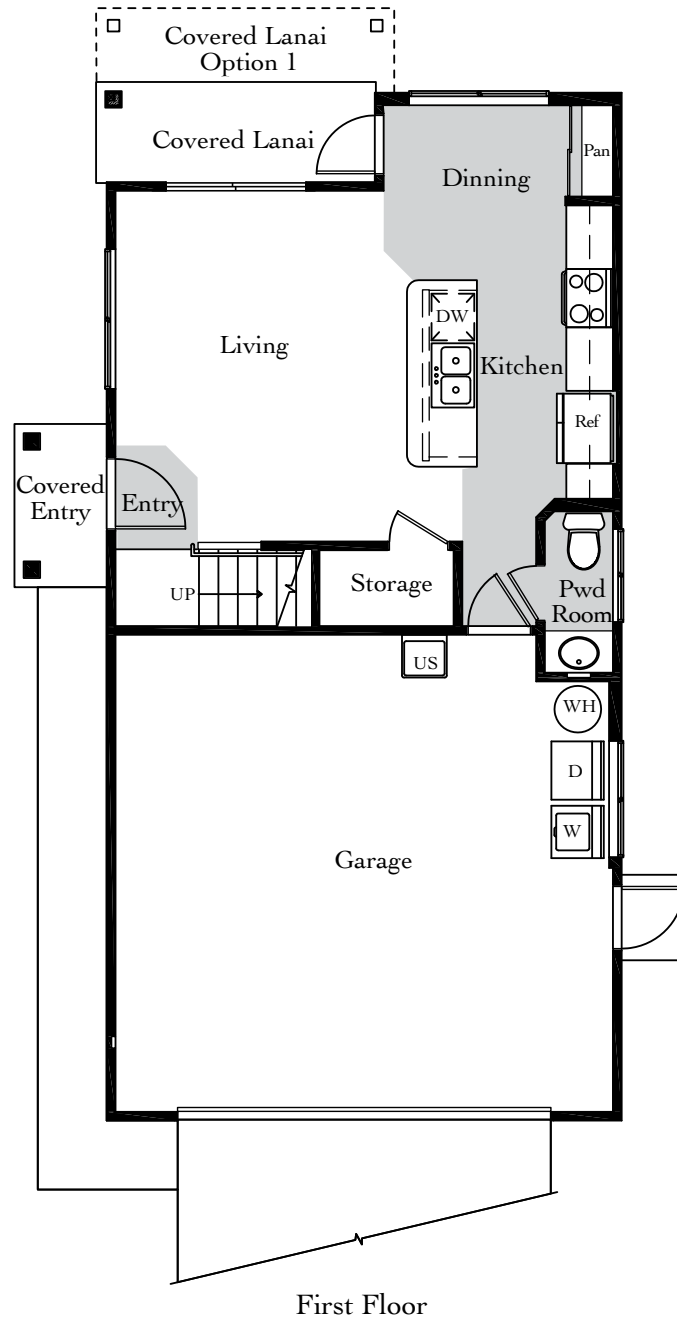
## 3 Bedroom, 2.5 Bath



First Floor 440 sq. ft.  
Second Floor 819 sq. ft.  
Total Living Area 1,259 sq. ft.

Covered Entry 20 sq. ft.  
Garage 428 sq. ft.  
Covered Lanai 43 sq. ft.  
Option-1 Covered Lanai 81 sq. ft.

Rendering may be slightly altered. Square footages are approximate. Features may vary due to location and site conditions. Gentry reserves the right to make changes to design specifications and make material substitution without notice. These plans are copyrighted. Unauthorized copying or use of these plans is a willful infringement of Gentry Homes, Ltd.'s rights under copyright law and may result in a liability up to \$100,000 and attorney's fees and costs incurred to protect its rights.



Second Floor

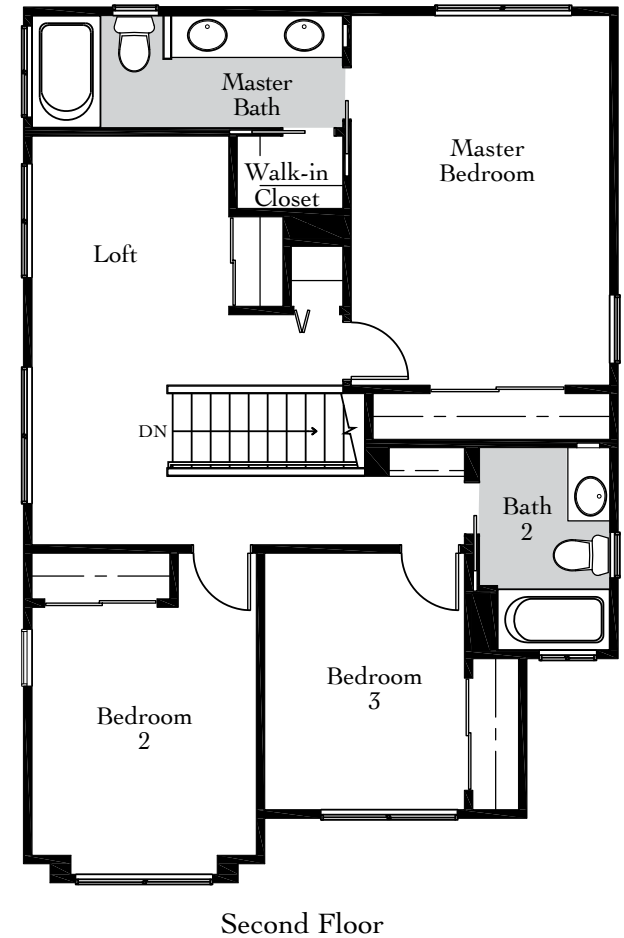
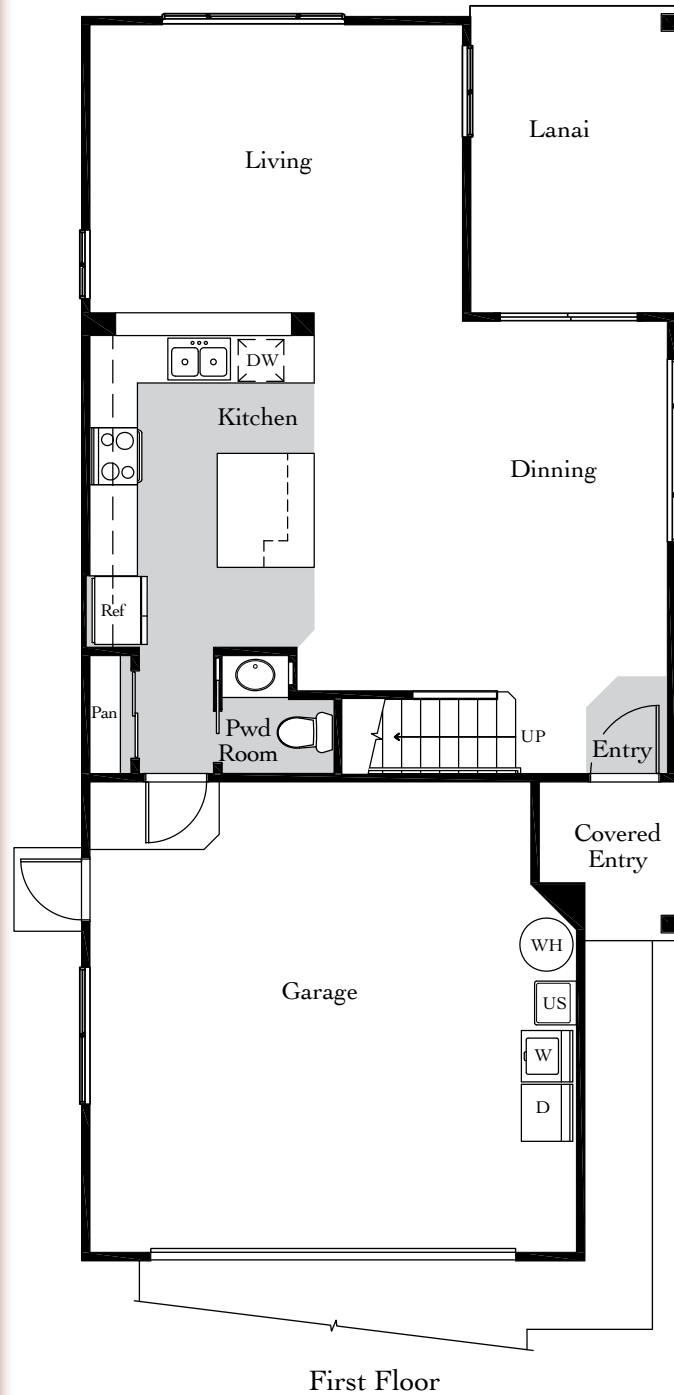
# PLAN C

## 3 Bedroom, 2.5 Bath



First Floor	714 sq. ft.
Second Floor	851 sq. ft.
Total Living Area	1,565 sq. ft.
Covered Entry	34 sq. ft.
Garage	429 sq. ft.
Covered Lanai	116 sq. ft.

Rendering may be slightly altered. Square footages are approximate. Features may vary due to location and site conditions. Gentry reserves the right to make changes to design specifications and make material substitution without notice. These plans are copyrighted. Unauthorized copying or use of these plans is a willful infringement of Gentry Homes, Ltd.'s rights under copyright law and may result in a liability up to \$100,000 and attorney's fees and costs incurred to protect its rights.



# FEATURES

## ***Energy Savings Features***

- Low-E dual paned vinyl windows
- Central air conditioning with 20 SEER rating
- Solar water heating system with 80 gallon tank
- Sprayfoam Insulation
- LED lighting package
- Insulated roll up garage door with remotes
- Digital Thermostat

## ***Interior Appointments***

- 9' ceiling in all living room areas
- Plush wall to wall carpet
- No wax resilient flooring in entry, kitchen and baths
- Designer laminate cabinets
- Corian kitchen countertops
- GE appliance package including:
  - Ceramic top range/oven
  - 21 cu.ft. refrigerator with ice maker
  - Extra large washer/dryer
  - Dishwasher
- Vented microwave/hood
- Stainless steel kitchen sinks
- Kohler plumbing fixtures
- Walk-in closets
- Mirrored closet doors
- Cultured marble vanity countertops
- Sterling – Vikrell tub and shower surrounds
- Cable in all bedrooms and living area
- Ceiling lights in all bedrooms
- Fiber optic cable to the home and CAT-5 wiring in all living areas
- USB outlets in bedrooms and kitchen
- Whole home surge suppressor

## ***Exterior/ Structural Appointments***

- Elegant raised panel front doors
- Rear yard vinyl fencing with gate
- Utility sink in garage
- Silent truss joist flooring system
- Borate treated lumber with 30-year warranty
- Composite roof with limited lifetime warranty
- James Hardi siding with 30-year limited warranty
- Front yard landscaping
- Gravel edging
- Seamless rain gutters

## ***Your maintenance fee includes the following related to the common areas only:***

- Property insurance
- Landscaping/maintenance of entry, park and roadway
- Water, sewer and electrical fees

## ***Optional Upgrades:***

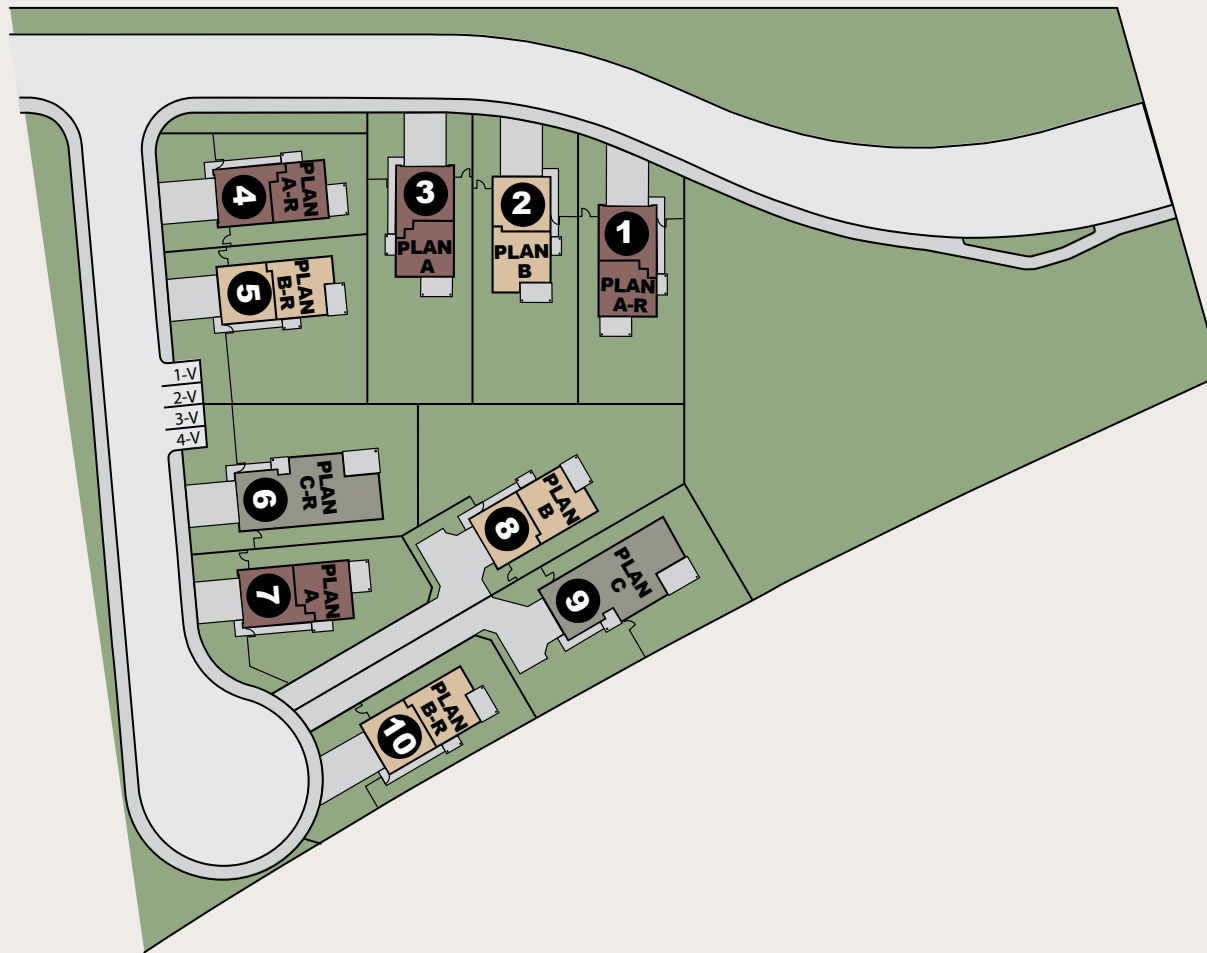
- Covered lanais - (Plan C standard)
- Stainless steel appliances
- Ceiling fans
- Wireless security system
- Flooring upgrades





# KEALIʻI

BY GENTRY





## GENTRY HOMES

### Our Vision

People building quality homes and communities for a better Hawaii.

### Our Mission

Provide value to our customers through:

- Innovative design and technology
- Quality construction
- Competitive pricing
- Superior customer attention

91-5408 Kapolei Parkway, Unit 19,  
Kapolei, HI 96707  
Open Tues - Sun 10 am to 5 pm  
Mon - 12 pm to 5 pm

PHONE: (808) 447-8420  
FAX: (808) 447-8421

[www.gentryhawaii.com](http://www.gentryhawaii.com)

